



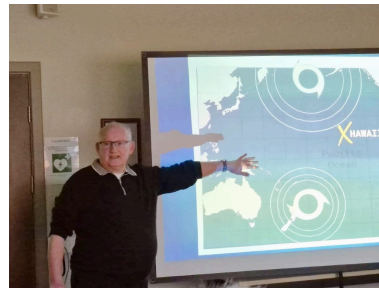
Issue Number 166 April 2026

Charity Corner - Fundraisers



Pages 8/9

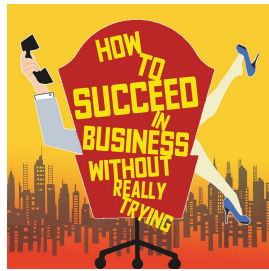
Science & Technology



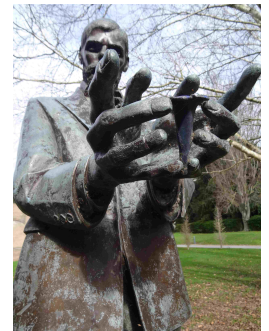
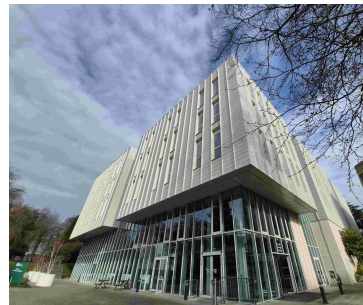
Page 10

Theatre Group

Page 15



Photography Group



Page 13

Strollers



Page 20

Our Monthly General Meeting

Thursday 16th April at 10.30 Carlton Pentecostal Church

Please send your newsletter items and photos to Sue/Assistant Newsletter Editor and Graeme/Web Manager via the 'u3a Officers' page in Beacon by 5pm on the last Thursday of the month. Next deadline: **Thursday 30th April 5pm**

u3a General Meetings

March speaker - Blood Bikes

Jon Fryer and Roger Wakefield gave a very entertaining and informative talk about their work with Blood Bikes, a voluntary service which began in 1962 and in Nottingham in 2013. It has 161 volunteers, 10 bikes, 9 cars and some mini bikes. Jon is a biker and a driver whereas Roger is a driver only. There is no government funding and all volunteers are completely unpaid. They offer an out of hours courier service for the NHS between the hours of 1800 and 0600 and 24 hours at weekends and bank holidays.

As the name of the service suggests whole blood and blood products are transported regularly as well as tissue samples, medication, equipment and heel prick samples from newborns and much more, saving the NHS money and time.

They do not break the speed limits and receive expert training. The minimum commitment is 15 hours over 6 weeks, and some volunteers work as fundraisers too.

Both Roger and Jon emphasized the sense of purpose, connection with their community and sense of making a difference, that helping Blood Bikes gave them. Clearly they both enjoyed their job and there was plenty of camaraderie.

The talk was very well received with many questions asked and answered. There was an opportunity to donate too.

Marianne White

Venue for our General Meetings - Reminder!

Just a reminder that our general meetings will be held at **Carlton Pentecostal Church** on Station Road, Carlton. There is seating for over 200, including some balcony seating, and a separate cafe area.

There is a large car park at the rear of the property off Wallace Avenue, with disabled parking, and some disabled parking at the front on Station Road itself.

Speaker for April General Meeting

Dr Ann Featherstone - A Storm in a Teacup

Dr Ann Featherstone is a retired university lecturer and writer, with a particular interest in 19th century popular entertainment. She's been an expert guest on '*Who Do You Think You Are?*', and '*A House Through Time*'.



She is an expert on carrying out historical research, and in her talk at our General Meeting will present the details of the following intriguing events.

"At lunch time, 8th April 1908, all the waitresses at the Cabin Restaurant, Piccadilly Circus, went on strike. Under the leadership of waitress Miss 'Ken' Ware, their action closed the restaurant and they were dismissed. Their response was to open their own co-operative restaurant, Ken's Kabin, on Brompton Road, rejecting overtures from the Women's Freedom League and distancing themselves from the suffrage movement in general. They were radical women who chose to 'go it alone'."

Janet Allen

Editor's Note

Thank you again for your newsletter contributions, please keep them coming through to Sue Warren/ Assistant Editor and to Graeme Bunting/ Web Manager for our website. We have a bumper 26-page edition this time!

I will be stepping down in June this year as Editor, so we do need to find somebody to replace me (please see page 5 for a more detailed description of what is involved). It would also be good to expand our newsletter team, so that the work is not just done by two people. If anyone is interested in either the Editor or Assistant Editor role, please get in touch with me or Sue Warren. Happy to explain further what we do each month.

Thank you

Clare Quigley

General Meetings

Well we've had two meetings at the Carlton Congregational church, and are enjoying the atmosphere there, as well as the excellent sound system. We seem to have all learnt how to queue for the all-important coffee.



Please continue to bear with us as we work out where the best places are for the different tables.

The raffle table is in the coffee area, and the selling of tickets will stop at 11.15. The raffle will be drawn, and the results announced around 11.20 giving the winners time to collect their prizes from the coffee area, which should be clear by then.

The coffee cup lids can be recycled in our 'plastic lids' bag at the back of the hall (please no cups, ONLY lids).

During membership renewal time, the membership team will be using the area at the end of the coffee area to process our renewals.

Mark Reynolds

A Great Night with Kelly's Heroes

Well we had an excellent Saturday night watching this local Irish band at the Richard Herrod Centre - our u3a fundraiser. There was even dancing!

A BIG thank you to Neil Kendrick in going above and beyond for organising the whole evening. It really was much appreciated by all the audience, and my friends commented on what a friendly relaxed atmosphere there was.

Sue Warren



Editor's Role

As many of you know I will be stepping down in June as editor of this newsletter, so we are still on the look out for someone/several people working together to take on this challenge.

Here's a summary of what I do to give you an idea of what is involved.

- Sue Warren/ Assistant Editor receives the content by the deadline, checks it through, edits if necessary and then sends the content to me in batches

I receive the latest calendars to include from John and I roughly plan out the newsletter, noting which are full page articles

- Using Adobe Express software and the template that I've set up I start to add in the articles and photos that I have received
- Once all content is included, I highlight some stories on the front page, add the calendars to the two last pages and check the page numbers
- When I'm happy with my draft I send Sue a copy to check that I have included everything and that there are no spelling mistakes or layout/formatting issues
- Final version goes to Graeme for the website and to Pete the printer

I have really enjoyed the creative aspect of this role - choosing colours and layout, as well as the collaborative aspect - working with Sue Warren (and previously Pamela) has been great.

Clare Quigley / Newsletter Editor



Membership Renewal Time Starts Now!

Our renewal date is **1st June** however so that our small team can manage your renewals effectively you can start to renew from **1st April** and pay for the full year up until 31st May 2027. Great news!!!

Membership fees have stayed the same:
£14 for full membership and £10 for associate membership.

Ways To Pay

- General Meeting - Card Payment preferred at Carlton Pentecostal Church - 16th April & 21st May 10–12 noon
- Coffee Mornings – card payment preferred at Portobello Café – 2nd & 4th Thursday 10–12 noon
- Bank transfer – Carlton and Gedling u3a - sort code **77-22-29** account number **27434960** (please use your surname and membership number as a reference)
- Online via U3a webpage - Click the link below:
<https://carlton.u3asite.uk/membership-payment-renewal/>
- Paypal – online using the above link

Thank you

Cheryl Larcombe / Membership Secretary



Classical Music Appreciation

Dmitri Shostakovich (1906-1975)

At our March meeting, Paul Martinez gave the second part of his survey of the 15 symphonies of Shostakovich, covering those written between 1941 and 1971. Shostakovich's symphonies which can be thought of as a musical chronicle of 20th-century Soviet history, blending personal expression with sometimes biting political commentary. The cycle is renowned for its intense emotional range, ironies, and structural power.



We started with the second movement of Symphony No.7, known as the Leningrad Symphony. Shostakovich's longest symphony, the work typically takes approximately 80 minutes to perform. The composer wrote the first three movements in Leningrad while it was under siege; he completed the work in Kuybyshev, where he and his family had been evacuated, and premiered in that city on March 5, 1942. At first dedicated to Lenin, the symphony was later rededicated to the city of Leningrad, where it was first played under dire circumstances on August 9, 1942, nearly a year into the siege by German forces.

We then heard two movements from the Symphony No. 8, which has been described as the composer's most tragic symphony. The short third movement, driven onwards by strong motor rhythms, has been interpreted as a depiction of battle, or as "the crushing of the individual" by the Soviet system. It finally erupts into a massive climax, leading to the penultimate movement, a subdued passacaglia.

I don't have space here to give details of the rest of Paul's programme, which consisted of carefully selected movements from symphonies 9, 10, 12, 13, 14 & 15. Some of this music was quite challenging but I would like to thank Paul for his stimulating, well-researched and thought-provoking presentation.

Colin Jones

Charity Corner

Fundraiser Quiz

I have organised a quiz evening at the Loco Centre on Forrester Road, Netherfield on **Friday 15th May**. Doors open **7pm** for **7:30 start**. Tickets cost **£5** each and are available to buy from St George's Centre and myself.



This event is to raise funds for Trentside Medical Centre in Netherfield and Peacock Healthcare Centre on Carlton Hill to buy a FeNO machine to assist the diagnosis and remedial monitoring of children with asthma and so improve children's lives. Apart from the cost of the machine (which is not funded by the NHS) there are ongoing running costs including disposable mouth pieces, calibration and servicing. This is very close to my heart as my son was diagnosed with asthma when he was two years old.

Neil Kendrick has kindly agreed to host the quiz and I know many of you have been to his quizzes in the past and will know what a wonderful fun night we will have.

Andy Dixon is helping me to produce flyers and leaflets for distribution to shops in Netherfield and Carlton Hill and I have already been promised raffle prizes by both Tesco and the Co-op (watch this space for other contributors).

Please remember the date and I look forward to seeing as many people as possible on the night. Thank you

Pat Opala

Donated Foreign Currency

Last year we raised £64.33 for Mary's Meals charity (a simple solution to world hunger), via members donating their foreign and out of circulation currency at our General Meetings.

This year we have sent a further 3.79kg and this has raised another **£38.40**, which has been sent directly to Mary's Meals.

So a big thank you to everyone who donated. It is very much appreciated and has gone to a worthy cause.

Bridget Meats



Charity Corner

Fundraiser for Maggie's Support Centre at Nottingham City Hospital



Saturday 4th July 1-5pm

An unforgettable afternoon with
A glass of prosecco on arrival
A delicious two-course lunch
Live entertainment and singalong fun

Cleaver and Wake
1a The Great Northern Close
Nottingham NG2 3JL

Tickets **£55**

Anyone wishing to get a table together, or join an existing table at the event should contact : **0115 924 6211** or **nottinghamfundraising@maggies.org**

For anyone who has undergone, or is currently going through, any cancer treatments Maggie's provides support. There is always someone to talk to, have a cup of tea with, a group with the same or similar cancers to join who can give support. They provide various therapy classes as well.

The voluntary organisation provides for cancer sufferers and survivors as well as for relatives and friends of patients who often need support as well. Not everyone can cope when a loved one is diagnosed. Maggie's staff are there for everyone.

Teresa Storey

Science and Technology Group

Our March meeting was attended by 22 members to hear our guest speaker Glenn Turner, a retired master mariner. He discussed waves in the ocean, what you might see when on the sea, or on a beach and how to understand what you are observing.

Glenn explained that waves in water are caused by the wind blowing over the surface. Wind waves range in size from small ripples to waves over 30 metres high, being influenced by wind speed, duration, fetch (area affected) and the depth of the water. The stronger the wind, the higher and more powerful the waves are. Although there are complex mathematical equations to explain wave formation, fortunately, Glenn did not go into detail! Instead, he explained wave formation with analogies involving types of chocolate bar, which featured throughout the talk and were very relatable.



Surprisingly, when a wave is moving forwards, the water underneath does not travel in the same direction, instead moving up and down. This was illustrated by looking at the 'Mexican Wave' at sporting events where the wave moves along but spectators are moving up and down in their seats.

Glenn described the formation of many wave types, including surf waves, tsunamis, tidal bores, rip currents and 'rogue' waves. He demonstrated the power of these waves with diagrams and videos.

The next meeting of the Science and Technology Group will be on **Tuesday 28th April**, when Prof. Reg Dennick will talk about the development of the MRI Scanner.

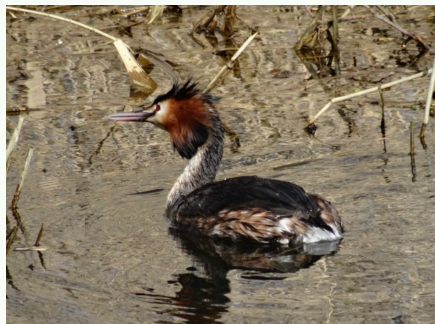
We look forward to welcoming any members who are interested in attending.

David Johnson

Bird Watching Group

Yes, a successful day's birding at Attenborough Nature Reserve!

The weather was a bit breezy and chilly but it was sunny - ideal birding weather.



We were hopeful that we'd at least see a bird or two, and we were not disappointed.

The highlight of the day was seeing the Great Crested Grebes eyeing one another up with a bit of a courtship display and some nest building. They went off and a little Coot popped over to give their nest a close inspection, and it looked like he or she thought it was a des res and was going to pop in an offer to the estate agent! Lovely.

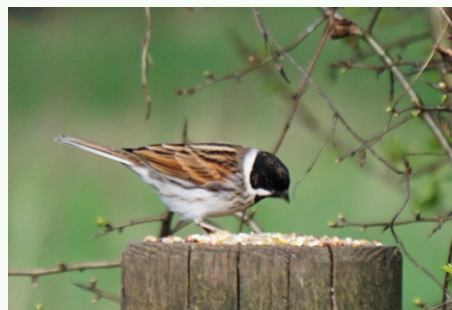
Another treat on the water was a Goldeneye, a distinctive black and white bird. We don't see them too often so we were most pleased to spot it.



The small birds were very amenable in posing for pictures. Thanks to Paul and Lorraine who sent our WhatsApp group some great snaps to remember our lovely day.

Come and join us! We are a friendly group and meet at the chosen venue on the second Friday of the month - lifts being offered to those who need them.

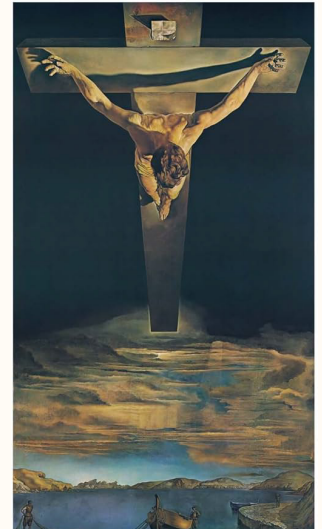
Helen Forrester



Art Appreciation

In March we chose the topical theme of Spring/Easter. We began with the Greek mythological explanation for the season and talked about the story of Persephone's kidnap by Hades into the underworld, to re-emerge into what we know as spring. We looked at the interpretation of this on Greek vessels, and how the story was interpreted by Victorian artists.

We then went on to the Christian imagery of Easter, and discussed **Salvador Dali's** painting of the crucifixion, painted in 1951. The work is done from an interesting perspective, looking down on the crucified figure.



The association of Spring with the land and the sowing of seeds was represented by the French artist **Jean Millet**, and his painting 'The Angelus'. Two peasants are seen working in the fields, with the church in the background calling them to prayers.

The theme of eggs was taken up in 'The Waterhole', by a native Australian artist. The painting was in the shape of an egg, and within it the artist had created a pattern that represented a period of drought. It had spiritual significance for the artist.

We looked at the iPad generated images **David Hockney** produced over five months in 2011. In all there are 64 drawings of the same road, and the result is an interesting and colourful series of art works.



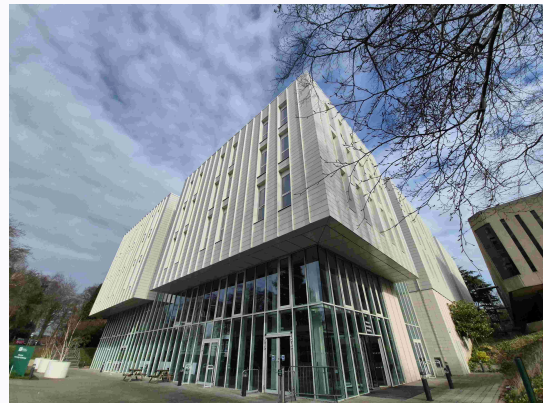
The Renaissance artist **Guiseppe Arcimboldo** was our next subject. He had a totally unique style of painting, producing an image of spring that is entirely composed of fruit, flowers and vegetables. It was very popular and appealed to the taste of the time.

We were then introduced to an artist unknown to us - **Boris Kustodiev**, a Russian artist born in 1878. His work was different in style to other European artists, especially his style of portraiture.

Finally we looked at a selection of Impressionist paintings of spring, including by **Van Gogh**. Their style, of course, lends itself perfectly to the subject.

Christine Russell

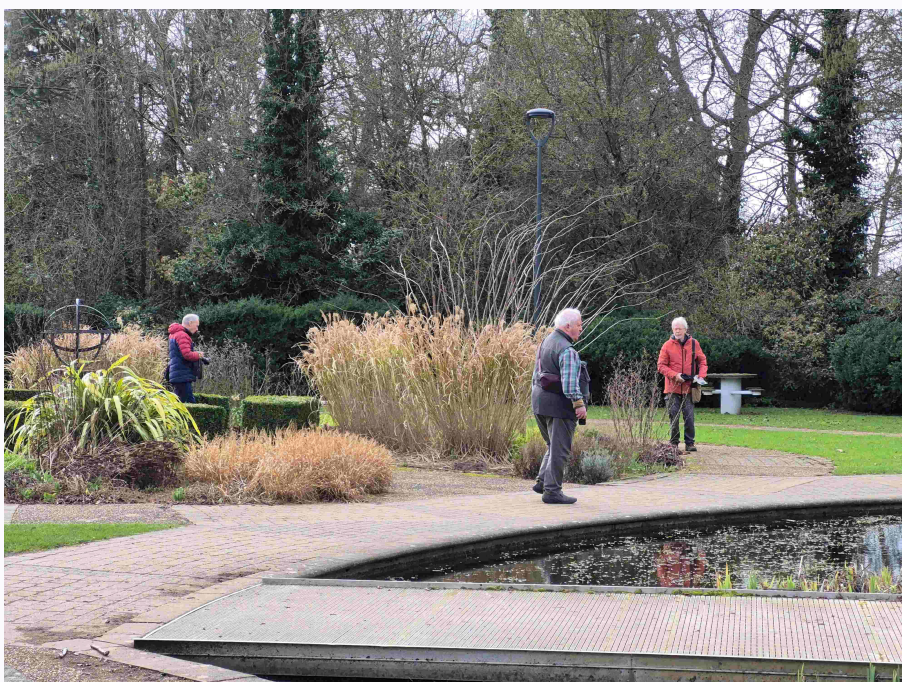
Photography Group



We had a great photo outing to Nottingham University in March when we explored the Millenium Garden for our photos. It's really good to spend a couple of hours focussed on (!) trying to improve our camera skills. And it was enjoyable to meet up to look at each other's work over a coffee at the end. Thanks to Rod for introducing us to the Garden.

In April we're going to Newstead Abbey. New members are always welcome.

Paul Martinez



Local History

March Meeting



At our March meeting, Robert Mee gave us an interesting talk on Almshouses. He started with the history of almshouses as a form of social housing dating from Roman times. Many were attached to monastic sites and were called hospitals – not for the sick but for the poor and homeless, as well as pilgrims and travellers. With the spread of leprosy during the Crusades, a form of home called a Lazar (after St Lazarus) developed. In addition there were bede houses, usually endowed by wealthy patrons and including a priest to pray for the benefactors.

With the development of Poor Laws, almshouses provided a very basic home for poor people who lived under license (with no rights of tenancy). The endowment was often supported by land or other investments to provide a charitable income. The charity would specify the type of tenant who would be eligible for housing – by sex, age or occupation.

Robert continued by telling us about many local almshouses with illustrations. In Gedling we have the Mary Hardstaff homes, named after a member of the family, and part owned by Digby Collieries. Still in use, they were for the widows and orphans of miners and now serve older residents. In Wilford are the Dorothy Boot homes for veterans of the Crimea and Indian Mutiny. Others, such as the Collins Almshouses, have been demolished or re-purposed. Income from the sale is then reinvested in building more modern properties, bungalows and flats which are often indistinguishable from other social housing.

On **21st April** Neil Kendrick will tell us about the history of the Jews in Nottingham. This will be at **2pm** at Richard Herrod Centre.

Andy Dixon

Theatre Group

Pick Up Tickets

The Magic Flute: Royal Opera broadcast, 2pm Sunday 26th April, Bonington Theatre, £12.50. **Organiser:** Paul Martinez

Small Island: 1.30pm Saturday 2nd May 2026, Nottingham Playhouse, £14.50. **Organiser:** Carolyn Broadhurst

Hansard 2.30 pm, Saturday 2nd May, Lace Market Theatre, £13. **Organiser:** Janet Whitchurch

Eugene Onegin: NY Met Opera broadcast, 6pm Tuesday 5th May, Bonington Theatre, £12.50. **Organiser:** Paul Martinez

Tickets on Sale

Barnum: 2.30pm Thursday 28th May, Nottingham Playhouse, £22.50. Step right up and enter the dazzling world of P. T. Barnum, where imagination and ambition know no bounds. This spectacular production will feature an extraordinary ensemble cast of over 20 actor-musicians, acrobats and amazing circus acts. **Organiser:** Carolyn Broadhurst

Playboy of the Western World National Theatre broadcast, 7pm, Thursday 28th May, Bonington Theatre, £10. Pegeen Flaherty's life is turned upside down when a young man walks into her pub claiming that he's killed his father! **Organiser:** Paul Martinez

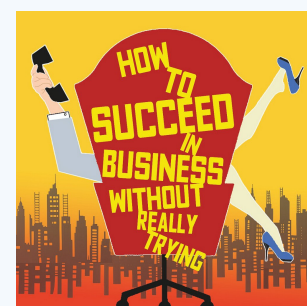
Last chance to buy?

Les Liaisons Dangereuses : National Theatre broadcast, 7pm, Friday 26th June, Bonington Theatre, £10. Two decadent French aristocrats turn seduction into strategy and weaponise desire. But when their alliance collapses into rivalry, the battle between them threatens to destroy everyone in their path. **Organiser:** Paul Martinez. **Last chance to buy.**



How to Succeed in Business Without Really Trying: 2.30pm Saturday 25th July, Lace Market Theatre, £16

The show tracks the rise of J. Pierrepont-Finch in 1960's corporate America. Following the guidance of a little handbook called '*How to Succeed in Business without Really Trying*', he climbs the corporate ladder from lowly window washer to high-powered executive. **Organiser:** Janet Whitchurch



Theatre Review

Review of Kiss me Kate (2) at Nottingham Girls High School Theatre

Firstly, how fortunate are we to have two amateur dramatic theatre companies in Nottingham, who almost inevitably deliver the goods; namely West Bridgford Operatic and the Lace Market.

The production of 'Kiss Me Kate' is not an easy one demanding people who can dance, sing and act but they pulled it off! I thought their rendition of "Too Darn Hot" and "Always true to you...in my Fashion" were done excellently not to mention "Tom, Dick and Harry!" The stage set for the former was amazing!

I felt the show was a bit slow moving in the beginning, but gathered pace in the second half. I was impressed with the costumes, the singing, the choreography and the sheer enjoyment on the faces of the company. Their next production in a year's time is "Beauty and The Beast" and I look forward to it!

Janet Whitchurch

Out to Lunch



The new lunchtime menu at Portobello was very well received at the March meeting of the Out to Lunch Group.

Two courses for £12.95 was good value. Pat's starter of meatballs was like a main meal, and the main courses were generous. The new risotto recipe was delicious, and it was my mother's long ago order of 'You don't get down until your plate is empty' that made me polish off the lot... honestly.

I managed to polish off the lot, including a slice of New York cheesecake - honestly I can't bear waste! Pictured are some of the group.

Our next meetings are on Monday **13th April** at The Gedling Inn, and Tuesday **28th April** at Portobello.

Maggie Martinez

Grumpy Old Men

The Grumpies met for their fortnightly Friday lunch and to consider contemporary issues.

As usual, we discussed candidates to be “put on the bus” for having met our displeasure this month. The candidates selected are the bosses of petrol companies who are profiteering from Trump’s latest war.



Topics for discussion included:

- What did the Romans ever do for us? - introduced pet cats
- Andrea Thompson won the world's strongest woman competition after the original winner was found to be a biological male
- A man hid his mother's dead body for three years and dressed as her to collect her benefits but was caught when an official noticed his Adam’s apple
- A school has removed all the mirrors from the toilets as pupils couldn’t stop looking into them, causing congestion
- A Syrian girl In the Netherlands was drowned as an honour killing because her Western behaviour shamed her family
- The Manchester to London “ghost train” will now carry passengers rather than just staff
- A survey of school pupils found 30% describe themselves as not motivated, up from 25% the year before
- Research reveals that pomegranate juice could help clean your arteries and assist with other heart related issues
- Emily Thornberry MP described President Trump as “no Churchill”
- A very drunk driving instructor drove into a ditch en route to his first pupil of the day
- Elon Musk's X platform removed eight hundred million fake accounts in 2024
- Scalextric brand to be sold by Hornby for £20 million

As always, the conversation was genial, informative, varied and amusing.

David Colyer

Trips and Visits

Coach trip to Trentham - Wednesday 10th June

£18 for the coach only

The Trentham Estate in Stoke on Trent is home to award-winning gardens, ancient woodland, an outdoor shopping complex, and the Monkey Forest.

Information about the different attractions at the Estate, and a map of the area can be found on the following website <https://trentham.co.uk/>

The coach will leave Richard Herrod at 9 am – returning from Trentham 4 pm.

Those interested in visiting the Monkey Forest will be dropped off first. Then the coach will park at Trentham coach park for those wishing to visit the gardens and/or the shopping village.

It is up to the individual to book and pay for the Monkey Forest and/or the gardens either on the day or online beforehand.

When you pay for the bus you will need to let us know whether you are visiting the Monkey Forest. Just bear in mind that if you are visiting the Monkey Forest, you will have to make your own way back to the Trentham coach park near the Shopping Village.

For more information and to book a seat on the coach, come and see us at the April general meeting Trips & Visits table or email me if you wish to be added to the list.

You can also contact me via our group web page: [Trips & Visits - Trentham Gardens](#)

Janet Allen

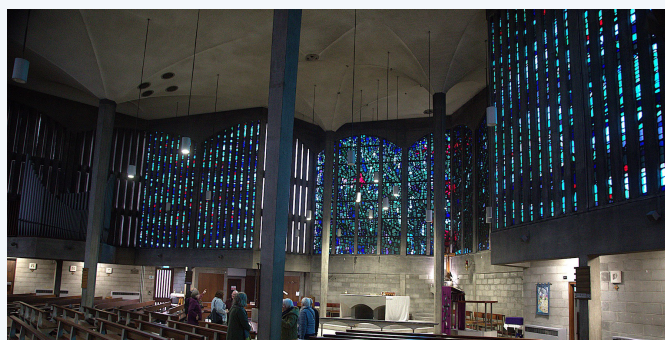
u3a

u3a

u3a

Religious Architecture Group

Visit: The Church of The Good Shepherd, Woodthorpe



The Church of the Good Shepherd is a Roman Catholic church in Woodthorpe, Nottinghamshire. The church was first opened on 23 July 1964 and is a Grade II* listed building.

The architect was **Gerard Goalen** who specialised in church architecture and was influenced by continental models and the Liturgical Movement. His modern design won an award from the Royal Institute of British Architects in 1966.

The dalle de verre stained glass is by **Patrick Reyntiens** who was "the leading practitioner of stained glass in this country." It is a modern technique using striking thick stained glass slabs rather than thin leaded glass.

The church is particularly notable for its spatial qualities, for its delicate vaulting descending onto slender piers, and for its fine display of stained glass.

The Church had suffered with roof issues and was on the Historic England - Heritage at Risk Register, having been assessed as condition "Poor" and "Priority: A - Immediate risk of further rapid deterioration or loss of fabric". In 2012, the church was awarded £119,000 by English Heritage to resolve issues with concrete fatigue and reinforcement decay.

David Colyer

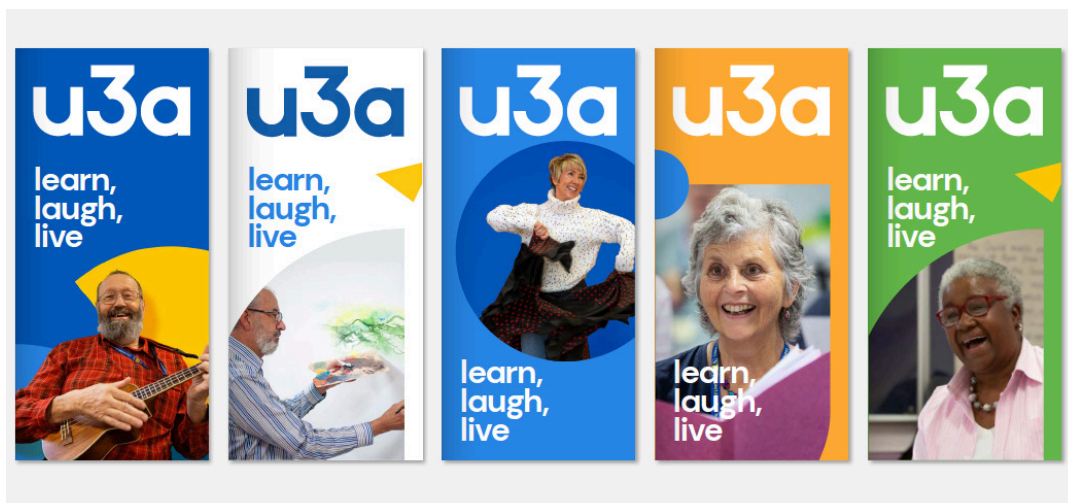
Strollers



This month the stroller's group had a nice gentle walk in glorious sunshine from Shelford towards the River Trent, observing The Ferry Boat from the far side.

There was blackthorn blossom galore, and three hares and a red kite were seen, with enjoyable friendly chatty company along the way. Mud was forecast, and we had to skirt round just one large puddle; otherwise the footing was good. We saw a pretty fierce sign warning dog owners to keep their pets on a lead around livestock.

Paul Martinez



Striders

February Walk

Seven of us set off for a six and a half mile circuit around Calke Abbey, and although the weather forecast was not promising, the rain held off until we got back. The walk took in Dimminsdale Nature Reserve, where the snowdrops were still out en masse. Then a path along the disused tramway took us through a tunnel into the Limeyards. This is a spectacular heritage site and a site of special scientific interest (SSSI), with plenty of evidence of past industry, but now more like a setting for a Lord of the Rings film. A large herd of Muntjac deer, startled by a dog, completed the picture. After a cup of coffee and a picnic lunch at Calke, we made our way back via the deer park and by the side of Staunton Harold reservoir, with lovely views over the countryside and parkland. A perfect walk for a grey day!

March Walk

Seven of us enjoyed a six-mile walk on a bright spring day. After a delayed start due to roadworks we set off from the car park in Baslow and walked uphill to reach a path that went just below Baslow Edge. We followed the path until we reached the road just below Curbar Gap. After crossing the road, we continued through birch woodland just below Curbar Edge, where Diane provided the entertainment, eventually climbing up onto the edge and returning to the cars via both edges.

April Walk

We are returning to Derbyshire again this month and are repeating a walk we did in 2022 which was dubbed the floral walk because of the variety of wild flowers on the way including orchids, alpine pansies and wild garlic among others. The walk is about 7 miles in length on good paths but there may be some mud. We start by walking gently up Deep Dale then cross to the Magpie mine before descending to Ashford in the Water via Shelford. A short walk along the bank of the river Wye then takes us back to the car park.

Meet in the car park on Ranmoor Road at 9.00am on **Thursday 23rd April**. Have a good breakfast and bring a packed lunch.

Brian Shield



Trips and Visits

Visit to The Deep, Hull

Despite a mixed day of weather (sunshine, hail, high winds) 52 members of our u3a had a great day at The Deep. So much history of our oceans and so many different fish.

The fish ranged from angel and clown fish, to sharks and rays. But there were also turtles, poisonous blue frogs and penguins. We think the Gentoo penguins were bored of humans looking at them as many had their backs on us, though others in our group were treated to a full frontal view.

There were prehistoric sea creatures 'swimming around' and one CGI crocodile-like creature tried to 'crash through the glass'. There were many different sea urchins and beautiful jellyfish too. Some of our members enjoyed a talk given by a Deep Crew member of staff.

A couple of us were blown to *The Street Life Museum*, just 10 minutes' walk away. A fascinating collection of shops, motor vehicles, carriages, bicycles, trams. Also a level crossing with signal box and a bi-plane. Lots of Hull history here.

A really good day trip.

Teresa Storey



Five Miles and a Cup of Tea

As the fields were still wet and muddy after the very wet start to the year, this month's walk was a five-mile circular over Bramcote Hills, with lovely views including the site of the old Bramcote Hall, Beeston Fields Drive and Sandy Lane Nature Reserve. 14 of us walked up and down dale in (some) sunshine. There were the 'usual' slopes and it was a little muddy in places, but mostly we were on clear tracks and paved surfaces.



We spent some time in the grounds of the demolished Bramcote Hall where there was only a little stonework remaining, including the staircase approach to the front door. The hall was built in the 1860s in a park on the crest of the hill behind the original church. It became the home of Frederic Chatfield Smith who altered and enlarged it until it became a mansion with 21 bedrooms that could comfortably accommodate his 11 surviving children together with the staff he retained.



When he died in 1905, the building was left to his widow for her lifetime. After her death in 1914, the family decided to sell the Hall. From 1921 it became a prep school but in 1965 the hall was sold to Nottingham University. The University's plans for the hall, however, did not come to realisation and sadly the building was eventually demolished.

Lunch was served at the Nurseryman on Derby Road, and we all enjoyed reasonably priced delicious food.

A 'BIG THANK YOU' to **Chris** and **Diane** for leading the walk.

Our next walk is on **Tuesday 14th April** and will be around Gedling Country Park.

David Johnson

Diary : APRIL 2026

Date	Time	Group	Meet at	Contact	
12	Sun	16:30	Theatre	Bonington Theatre	Paul 07305 071 206
13	Mon	10:00	Classical Music Study	A member's house	Colin 07881 289 298
13	Mon	10:00	French for Fun	Mapperley Golf Club	Brian 07724 801 115
13	Mon	10:00	Table Tennis	Netherfield Forum	Andrea 07527 090 324
13	Mon	10:30	Greenfingers	Gedling Road Methodist Church	Nicola 07794 368 566
13	Mon	12:00	Out to Lunch	The Gedling Inn	Maggie 07554 518 444
13	Mon	14:00	History Study	Richard Herrod Centre	Andy 07753 287 562
13	Mon	14:00	Tai Chi	Colwick Community Centre	Jan 07496 999 808
13	Mon	18:30	Wine Tasting	Burton Road Community Centre	Chris 07879 696 712
14	Tue	09:30	Five Miles and a cup of tea	Meet at Ranmoor Road car park	David 07549 132 066
14	Tue	14:00	Poetry Appreciation	A member's house	Lyn 07305 144 102
15	Wed	10:00	Creative Appliqué	Carlton Pentecostal Church	Jackie 07708 035 311
15	Wed	10:00	Transport	The Bread and Bitter	Ken 07584 835 479
15	Wed	10:00	Ukulele	St Georges Centre	Richard 07514 212 134
15	Wed	12:00	Grouchy Girls	The Willowbrook	Jennifer 07906 735 885
15	Wed	14:00	Bonsai Improvers	A member's house	Paul 07305 071 206
15	Wed	14:00	Bridge	The Gedling Inn	Anne 07969 459 767
15	Wed	14:00	Walk Fit - To Music	St Georges Centre	Sandra 07826 039 733
16	Thu	10:30	General Meeting	Carlton Pentecostal Church	Mark 07826 629 063
17	Fri	09:45	Singing for Pleasure	St Georges Centre	Sheila 07703 755 906
17	Fri	10:00	Drama	Carlton Fire Station	Jane 07825 775 213
17	Fri	14:00	Canasta	Richard Herrod Centre	Lynne 07771 801 957
17	Fri	15:00	Ale, Lager and Cider tasting		Richard 07514 212 134
18	Sat	10:00	Cycling For Fun	Jct of Burton Rd and Conway Rd	Sue 07780 449 894
20	Mon	10:00	French Conversation	Mapperley Golf Club	Annabell 07900 067 144
20	Mon	10:00	Table Tennis	Netherfield Forum	Andrea 07527 090 324
20	Mon	14:00	Art Appreciation	A member's house	Christine 0115 953 6725
20	Mon	14:00	Tai Chi	Colwick Community Centre	Jan 07496 999 808
21	Tue	14:00	Local History	Richard Herrod Centre	Andy 07753 287 562
21	Tue	14:00	Rummikub	Richard Herrod Centre	Lynne 07771 801 957
21	Tue	18:00	Dining Out	Ajwa Deli	Maggie 07554 518 444
22	Wed	10:00	Making Music For Fun	Loco Centre	Richard 07514 212 134
22	Wed	14:00	Bridge	The Gedling Inn	Anne 07969 459 767
22	Wed	14:00	French 3	St Georges Centre	Ann 07837 803 837
22	Wed	14:00	Walk Fit - To Music	St Georges Centre	Sandra 07826 039 733
23	Thu	08:30	Trips and Visits	Meet at Richard Herrod	Coleen 07450 938 777
23	Thu	09:00	Striders Walking	Meet at Ranmoor Road car park	Brian 07814 628 190
23	Thu	10:00	Coffee Morning	Portobello	Cheryl 07787 427 200
23	Thu	10:00	Strollers Walking	Meet at the start of the walk	Paul 07305 071 206
23	Thu	14:00	Card & Board Games	St Georges Centre	Maggie 07554 518 444
23	Thu	17:00	Pickleball	Carlton Forum Leisure Centre	Coleen 07450 938 777
24	Fri	11:30	Family History	Loco Centre	Sandra 07826 039 733
24	Fri	12:00	Grumpy Old Men	St Georges Centre	Ian 0115 911 4681
24	Fri	14:00	Canasta	Richard Herrod Centre	Lynne 07771 801 957
24	Fri	14:00	Creative Writing	St Georges Centre	Coleen 07450 938 777
25	Fri	10:00	Cycling For Fun	Jct of Burton Rd and Conway Rd	Sue 07780 449 894
26	Fri	14:00	Theatre	Bonington Theatre	Paul 07305 071 206
27	Mon	10:00	French for Fun	Mapperley Golf Club	Brian 07724 801 115
27	Mon	10:00	Sewing	Carlton Fire Station	Susan 07708 471 023
27	Mon	10:00	Table Tennis	Netherfield Forum	Andrea 07527 090 324
27	Mon	17:00	Film Study	Zoom Meeting	Sue 07791 358 143
28	Tue	10:00	Science & Technology	Carlton Fire Station	Janet 07813 462 081
28	Tue	10:30	Committee Meeting	Manor Green Community Room	Mark 07826 629 063
28	Tue	12:00	Out to Lunch	Portobello	Maggie 07554 518 444
29	Wed	14:00	Bridge	The Gedling Inn	Anne 07969 459 767
29	Wed	14:00	Walk Fit - To Music	St Georges Centre	Sandra 07826 039 733
30	Thu	16:00	Newsletter Deadline		

Diary : MAY 2026

Date		Time	Group	Meet at	Contact
1	Fri	10:00	Drama	Carlton Fire Station	Jane 07825 775 213
1	Fri	10:00	Knit & Stitch	The Bread and Bitter	Jackie 07971 973 120
1	Fri	14:00	Canasta	The Gedling Inn	Lynne 07771 801 957
1	Fri	14:00	Spanish for Fun	Carlton Fire Station	Mark 07826 629 063
2	Sat	10:00	Cycling For Fun	Jct of Burton Rd and Conway Rd	Sue 07780 449 894
2	Sat	13:30	Theatre	Nottingham Playhouse	Carolyn 0115 676 267
2	Sat	14:30	Theatre	Lace Market Theatre	Janet 0115 840 0733
4	Mon	10:00	French Conversation	Mapperley Golf Club	Annabell 07900 067 144
4	Mon	10:00	Table Tennis	Netherfield Forum	Andrea 07527 090 324
5	Tue	10:00	Photography	Meeting Place TBA	Mike 07762 182 898
5	Tue	14:00	Book Club	Carlton Fire Station	Maggie 07951 299 113
5	Tue	18:00	Theatre	Bonington Theatre	Paul 07305 071 206
6	Wed	10:00	Creative Appliqué	Carlton Pentecostal Church	Jackie 07708 035 311
6	Wed	10:00	Opera Study	Zoom Meeting	Paul 07305 071 206
6	Wed	10:00	Singing for Pleasure	St Georges Centre	Sheila 07703 755 906
6	Wed	10:00	Ukulele	St Georges Centre	Richard 07514 212 134
6	Wed	14:00	Bonsai Beginners	A member's house	Paul 07305 071 206
6	Wed	14:00	Bridge	The Gedling Inn	Anne 07969 459 767
6	Wed	14:00	Walk Fit - To Music	St Georges Centre	Sandra 07826 039 733
7	Thu	14:00	Alternative Book Club	Manor Green Community Room	Gill 07802 700 852
7	Thu	16:30	Indoor Bowls	Richard Herrod Centre	Mick 0115 987 4239
7	Thu	17:00	Pickleball	Carlton Forum Leisure Centre	Coleen 07450 938 777
8	Fri	10:00	Bird Watching	Meet at the venue	Helen 07846 079 721
8	Fri	12:00	Grumpy Old Men	St Georges Centre	Ian 0115 911 4681
8	Fri	13:30	Craft	Loco Centre	Pat 07918 665 322
8	Fri	14:00	Canasta	The Gedling Inn	Lynne 07771 801 957
9	Sat	10:00	Cycling For Fun	Jct of Burton Rd and Conway Rd	Sue 07780 449 894
9	Sat	13:00	Wild Weekenders	The Willowbrook	Coleen 07450 938 777
11	Mon	10:00	Classical Music Study	A member's house	Colin 07881 289 298
11	Mon	10:00	French for Fun	Mapperley Golf Club	Brian 07724 801 115
11	Mon	10:00	Table Tennis	Netherfield Forum	Andrea 07527 090 324
11	Mon	10:30	Greenfingers	Gedling Road Methodist Church	Nicola 07794 368 566
11	Mon	12:00	Out to Lunch	The Gedling Inn	Maggie 07554 518 444
11	Mon	14:00	History Study	Loco Centre	Andy 07753 287 562
11	Mon	14:00	Tai Chi	Colwick Community Centre	Jan 07496 999 808
11	Mon	18:30	Wine Tasting	Burton Road Community Centre	Chris 07879 696 712
12	Tue	09:30	Five Miles and a cup of tea	Meet at Ranmoor Road car park	David 07549 132 066
12	Tue	14:00	Poetry Appreciation	A member's house	Lyn 07305 144 102
13	Wed	10:00	Discussion / Debate	Carlton Pentecostal Church	Coleen 07450 938 777
13	Wed	10:00	Making Music For Fun	Loco Centre	Richard 07514 212 134
13	Wed	10:00	Transport	The Bread and Bitter	Ken 07584 835 479
13	Wed	14:00	Bridge	The Gedling Inn	Anne 07969 459 767
13	Wed	14:00	French 3	St Georges Centre	Ann 07837 803 837
13	Wed	14:00	Walk Fit - To Music	St Georges Centre	Sandra 07826 039 733
14	Thu	10:00	Coffee Morning	Portobello	Cheryl 07787 427 200
14	Thu	11:00	Ten Pin Bowling	Nottingham Bowl	Brenda 0115 962 5757
14	Thu	11:30	Religious Architecture	Meet at the venue	Val 0115 950 6055
14	Thu	13:30	Art	Carlton Fire Station	Linda 07958 012 544
14	Thu	14:00	Card & Board Games	St Georges Centre	Maggie 07554 518 444
15	Fri	09:45	Singing for Pleasure	St Georges Centre	Sheila 07703 755 906
15	Fri	10:00	Drama	Carlton Fire Station	Jane 07825 775 213
15	Fri	14:00	Canasta	The Gedling Inn	Lynne 07771 801 957
15	Fri	15:00	Ale, Lager and Cider tasting		Richard 07514 212 134
16	Sat	10:00	Cycling For Fun	Jct of Burton Rd and Conway Rd	Sue 07780 449 894

Diary : MAY 2026

Date	Time	Group	Meet at	Contact	
18	Mon	10:00	French Conversation	Mapperley Golf Club	Annabell 07900 067 144
18	Mon	10:00	Sewing	Carlton Fire Station	Susan 07708 471 023
18	Mon	10:00	Table Tennis	Netherfield Forum	Andrea 07527 090 324
18	Mon	14:00	Art Appreciation	A member's house	Christine 0115 953 6725
18	Mon	14:00	Tai Chi	Colwick Community Centre	Jan 07496 999 808
19	Tue	14:00	Local History	TBC	Andy 07753 287 562
19	Tue	14:00	Rummikub	The Gedling Inn	Lynne 07771 801 957
20	Wed	10:00	Creative Appliqué	Carlton Pentecostal Church	Jackie 07708 035 311
20	Wed	10:00	Ukulele	St Georges Centre	Richard 07514 212 134
20	Wed	12:00	Grouchy Girls	The Willowbrook	Jennifer 07906 735 885
20	Wed	14:00	Bonsai Improvers	A member's house	Paul 07305 071 206
20	Wed	14:00	Bridge	The Gedling Inn	Anne 07969 459 767
20	Wed	14:00	Walk Fit - To Music	St Georges Centre	Sandra 07826 039 733
21	Thu	10:30	General Meeting	Carlton Pentecostal Church	Mark 07826 629 063
21	Thu	17:00	Pickleball	Carlton Forum Leisure Centre	Coleen 07450 938 777
22	Fri	11:30	Family History	Loco Centre	Sandra 07826 039 733
22	Fri	12:00	Grumpy Old Men	St Georges Centre	Ian 0115 911 4681
22	Fri	14:00	Canasta	The Gedling Inn	Lynne 07771 801 957
22	Fri	14:00	Creative Writing	St Georges Centre	Coleen 07450 938 777
23	Sat	10:00	Cycling For Fun	Jct of Burton Rd and Conway Rd	Sue 07780 449 894

Thank You

The Carlton & Gedling u3a relies on its volunteers, including committee members, editorial team, web editor, Beacon administrator, group convenors, secretaries and many more. You are all contributing your time and energy to make sure members can get together to have fun and learn something new. Our sincere thanks.

