

5 Miles and a Cup of Tea 2019

January 2019: BRAMCOTE

Twenty two members set off as usual from Ranmoor Car Park to travel to Beeston Fields Golf Club where we parked up. We walked up Beeston Fields Drive, the “posh” houses being noted as we passed by, and then up to Bramcote Park and Bramcote Woods, going as far as the bridge over the A52 leading to Stapleford.

We returned passing Beeston reservoir and onto Cow Lane before reaching the golf club again where we were able to get a drink and snacks with a good view of the golf course. The weather was kind to us, although a little icy in parts, but we all survived.



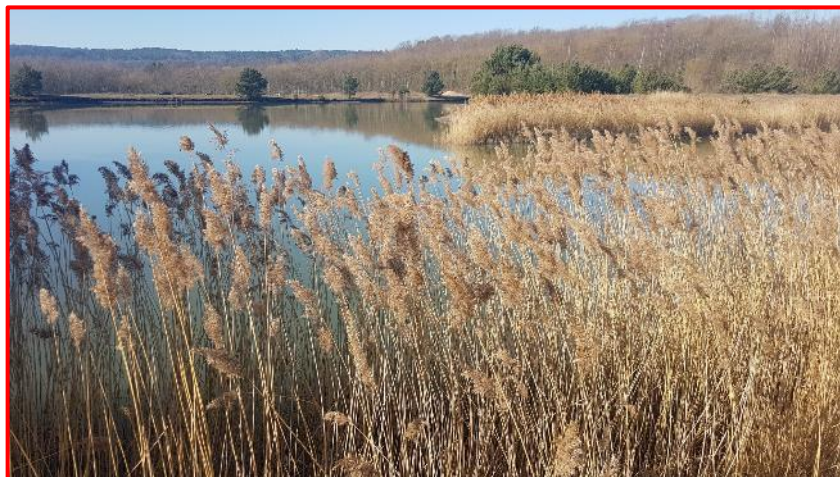
February 2019: ANNESLEY COUNTRY PARK

On what must have been the hottest February day in years, 27 of us set off from Linby along the disused railway to Annesley Country Park with its various picturesque lakes.

The colliery lagoons were created in the mid 1980's to manage waste water from Newstead and Annesley Pits which needed to settle in order to remove clays and other metals before being discharged into the river Leen. Prior to this the site had been used for a tip for colliery spoil. In the millennium the lagoons were left as open water and began to regenerate naturally with wetland plants like reeds and rushes colonizing. The area is now transformed into a beautiful country park for fishermen walkers and bird watchers alike.

A small diversion through a pretty wooded area was also incorporated. The day was finished perfectly with lunch and a pint at the Horse and Groom in Linby.

Sue Fairweather



March 2019: GEDLING COUNTRY PARK

In March the group did a local walk. We began as usual at Ranmoor Road car park but this time we left our cars behind, and instead began our walk through the back streets of Gedling. We crossed over Arnold Lane, under the railway bridge and followed the route going uphill.

Eventually we left the houses behind and came to open farm land. From here we followed a track which came out at Lambley Lane. One of our members said that when she first did this route the fields here used to be planted with roses bushes for the local garden centre.

We then turned left and took a small entrance into Gedling Country Park. We took the long route through the park, ending up back in Gedling. Although most people are familiar with the park it added a bit of novelty to approach it from a direction that was not so familiar. It was an interesting walk as it incorporated some countryside and parts of Gedling which was new to some of the group.



April 2019: FLINTHAM

On the Tuesday after Easter, 20 walkers set off from the Boot and Shoe pub in Flintham. The weather was somewhat cool and cloudy to begin with. We walked out of the village and over 3 stiles, skirting the edge of a private garden and headed into Syerston village.

The terrain was flat/easy walking and the ground was dry. The walk was mainly on paths through open farmland with fields of the yellow oilseed rape providing a contrasting colour to the otherwise green grass and crops.

We walked to the edge of Sibthorpe village and then turned back heading across a ploughed field which, fortunately was dry, eventually returning to Flintham. By the end of the walk the weather had improved and most of the walkers took advantage of the sunshine and had a drink/lunch in the pub garden.



May 2019: GUNTHORPE & HOVERINGHAM

In wonderful weather twenty lucky walkers set off from the Unicorn car park at Gunthorpe, walking along the village street before turning right along a minor road which soon became a footpath through the fields. It was easy, flat walking and we soon arrived near to the pub at Caythorpe. Turning left and then right we followed the stream to Hoveringham Mill, a real beauty spot, before coming out onto the road by the cricket pitch in Hoveringham

From there we walked back to the edge of Caythorpe before picking up the footpath to the River Trent and then back to Gunthorpe.

Some of us enjoyed a drink/meal in the Unicorn to round off a day of beautiful weather and good company. Thanks to Sally for choosing a great walk and ordering the sunshine.



June 2019: CLIFTON TO WILFORD VILLAGE

Twelve hardy walkers decided to walk, in spite of the rain, as arranged (the walk, not the rain) from the Riverside Farm pub. We walked up to and over Clifton Bridge and into Wilford Village. From here we took a detour through the playing fields and allotments, along the side of the tram track, back to the river, over the toll bridge and back to the pub. There we were able to sit together at a table for 12 and dry out whilst enjoying a drink and a choice of food from an extensive menu. The carvery especially is recommended.

July 2019: KEYWORTH and WIDMERPOOL

On what promised to be a very hot day 19 of us set off from The Salutation pub in Keyworth. The walk took us south of the village through fields and along farm tracks to Widmerpool, passing by beautiful Widmerpool Church. Beyond the village we skirted wooded areas that provided some welcome shade before we braved the field of rapeseed. In the practice walk the path gleamed clear and wide, but on our walk it was almost obscured by a jungle of vegetation. However, we made it and also survived the advances of an over friendly horse as we clambered over a short series of stiles.

The heat was taking its toll by now as we trudged along the road back to Keyworth. Mad dogs and Englishman.....



August 2019: GOTHAM

This month's walk was a shorter distance starting in Gotham village in ideal walking weather. Twenty walkers took part and we welcomed three new members. We began by walking uphill toward West Leake Hills and then turning away on a farm track. We followed the farm track for some distance, crossing Kegworth Road and walking uphill to Gotham Hills.

Before Gotham Woods we took a right turn following the edge of the wood, with a very large field of wheat on our right. After crossing into another field, we kept close to the wood until we were treated to a wonderful view towards Derbyshire.

An information board gave details of places of interest, the furthest being 23 miles away. Crich at 19 miles was visible. After continuing a further short distance, a gate led us to a downhill track, and then onwards back to Gotham village and good food at the Cuckoo Bush pub.

Margaret Martin



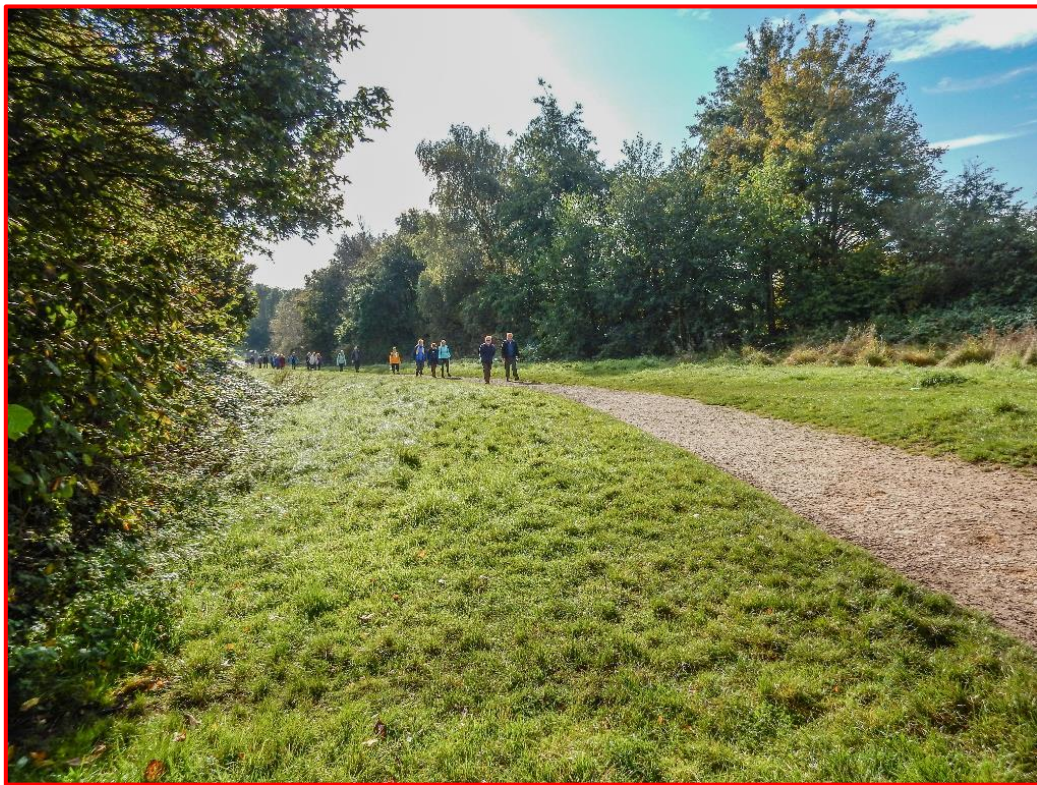
October 2019: BESTWOOD PARK

This month's walk was to Bestwood Country Park and Mill Lakes, an area of richly varied landscapes. A group of 23 walked through woods, which had once extended to Sherwood Forest, and meadows which had been popular hunting grounds for the local gentry, nowadays popular for recreational purposes for families, dog walkers, horse riders and in the summer full of wild flowers.

The highest elevation gave us fantastic views towards Hucknall, Bulwell, Bestwood Village and Papplewick and a time to reflect on our industrial heritage. Walking downhill we came to the restored Dynamo House and Winding Engine House with a footpath leading onto the Mill Lakes and taking us on the water side trail with its large variety of water birds.

The return path led to the old colliery village of Bestwood Village with its restored miners cottages and a trail back into the park and up to Alexandra Lodge, a beautiful building straddling both sides of the road, nowadays used by the park rangers but once the main coach entrance into the woods Uphill for the final stage of the walk to Bestwood Lodge Hotel, a fine 1865 Gothic building, originally a hunting lodge, but now offering refreshments to the intrepid walkers and a most welcome end to a lovely walk.

Barbara Birch.



November 2019: SNEINTON

This month the group did a historic walk around Sneinton. Until the nineteenth century Sneinton was a village outside of Nottingham, but with the coming of the Industrial Revolution it became a suburb of the city.

The walk began at Green's Windmill. Built in 1807, it was the home of George Green, well known in his time as an accomplished mathematician. From here we walked along Sneinton Dale to Notinton Place, and the birthplace of William Booth, the founder of the Salvation Army.

We crossed the road and passed St. Stephen's church. The parents of D.H. Lawrence were married in the church, and George Green is buried in the church yard. From here we went past Sneinton Hermitage, a series of sandstone caves, that were used as houses until the 1860s.

Crossing Manvers Street we followed Sneinton Greenway footpath until we turned left to Colwick Wood. Because of the wet conditions we kept this quite short, but took a path that led us to a panoramic view across Nottingham.

From here we wound our way through the Victorian streets of the area, passing Hermitage Square and the famous Bendigo pub. We then walked up Thurgarton and Castle Streets, both once homes of wealthy Victorians. Crossing Sneinton Dale we arrived back at the windmill. The general opinion seemed to be it had been a good walk to do in such wet conditions and an interesting alternative to our usual countryside venues.

Christine Russell

Footnote: You can read more about Green's Mill on the [Local History page \(2019 reports link\)](#).



December 2019: BURTON JOYCE & BULCOTE

18 walkers set off for a scenic walk around Burton Joyce and Bulcote to view the meanders of the River Trent and Belvoir Castle but we were met with thick fog. We escaped the mud by using tarmac paths and the fog was disappearing by the time we reached the riverside.

Mulled wine and home made soup plus a feast provided by the group was enjoyed by all. A lovely day. The walk will have to be repeated when we can see the view.

Mary Morley